



**COPY
NOTIFY!**

CopyNotify! (Version 1.4) Server INSTALLATION GUIDE

CopyNotify! Server INSTALLATION GUIDE



CopyNotify! (Version 1.4) Server INSTALLATION GUIDE

Components of CopyNotify!

CopyNotify! Server Component: [Security Administrator Console]

This component is installed on the computer that will actually display/receive the alerts/notifications from other computers on the office network. The server component also enables the Administrator to configure the settings for all the other computers on the network.

This CopyNotify! Server Component should be installed FIRST on the network.

CopyNotify! Client Component: [PC Anti Data Theft Monitor]

This component is installed on the computers on the network that need to be monitored for possible data theft activity.

Supported Operating Systems

Win XP (SP2) , Win Vista, Win 7.0, Win 8.x, Win 10, Win 2003, Win 2008

CopyNotify! Server Installation

Important Installation Tip :

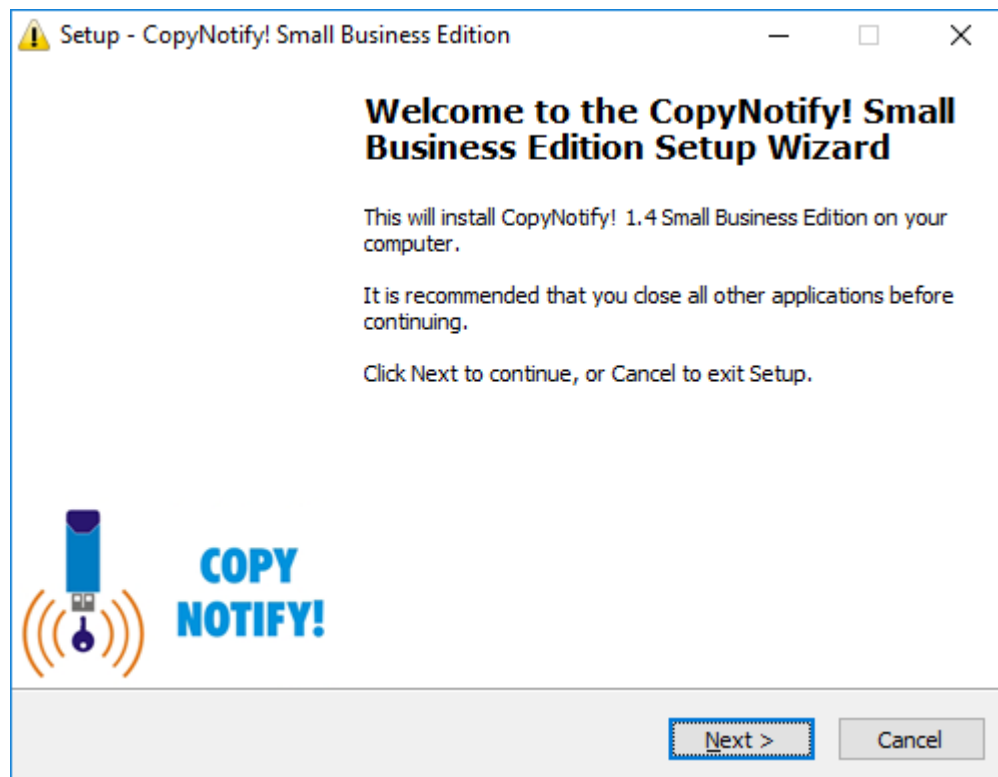
Before Installing the CopyNotify! Server/Client, please ensure that if a firewall is installed the following ports need to be opened.

- Port 40007 for UDP
- Port 40005 for UDP
- Port 5555 for UDP
- Port 5553 for TCP.



CopyNotify! (Version 1.4) Server INSTALLATION GUIDE

Double Click on CopyNotify!.exe and the following screen will appear

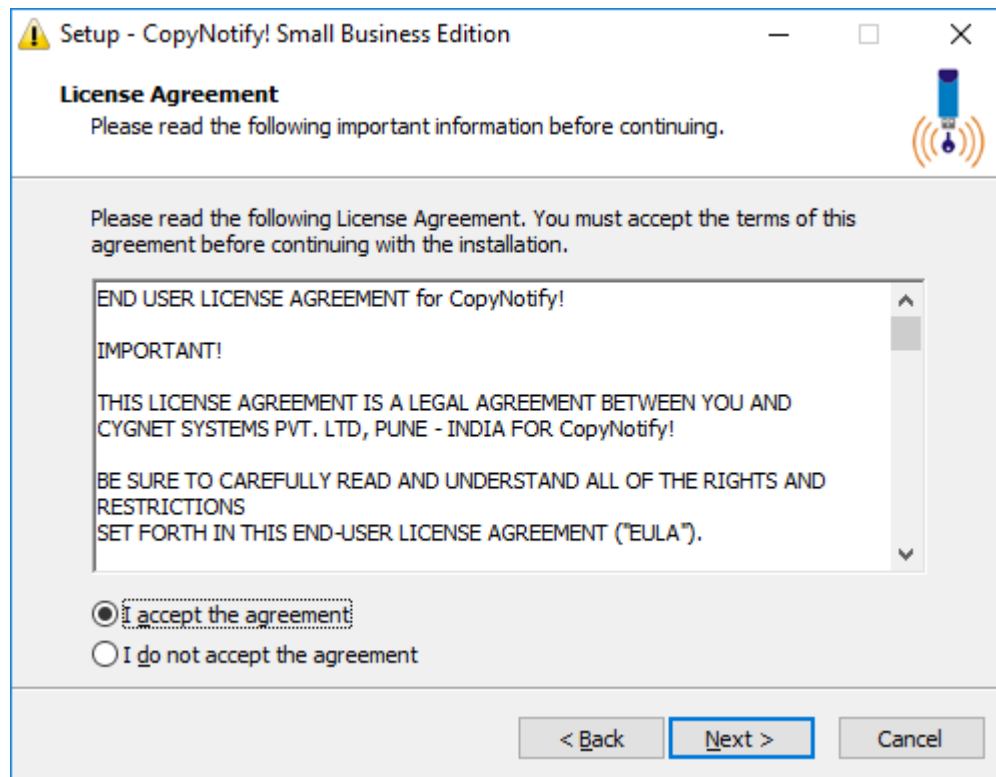


Click Next to continue....



CopyNotify! (Version 1.4) Server INSTALLATION GUIDE

The license agreement will be displayed (as shown below) which will need to be reviewed and accepted by the user. Once the license agreement has been reviewed click on "I accept the agreement"



Click Next to Continue

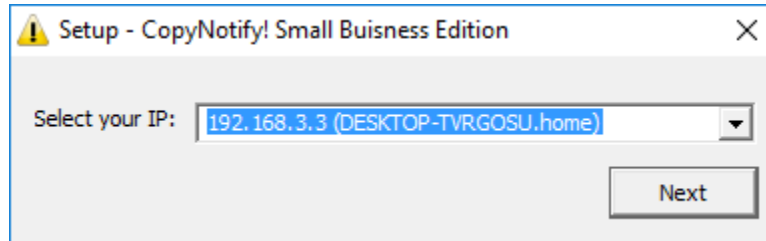


CopyNotify! (Version 1.4) Server INSTALLATION GUIDE



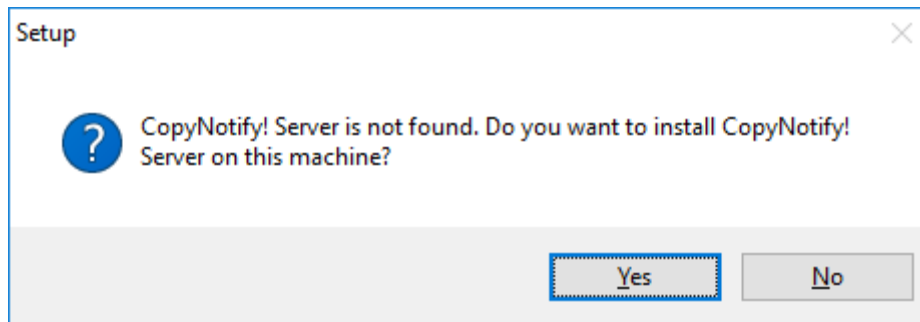
CopyNotify! (Version 1.4) Server INSTALLATION GUIDE

The user will then have to select the IP – Machine Name of the computer



Click Next to continue.

The following dialog box will appear as the setup automatically detects there is no other CopyNotify! Server instance on the network.

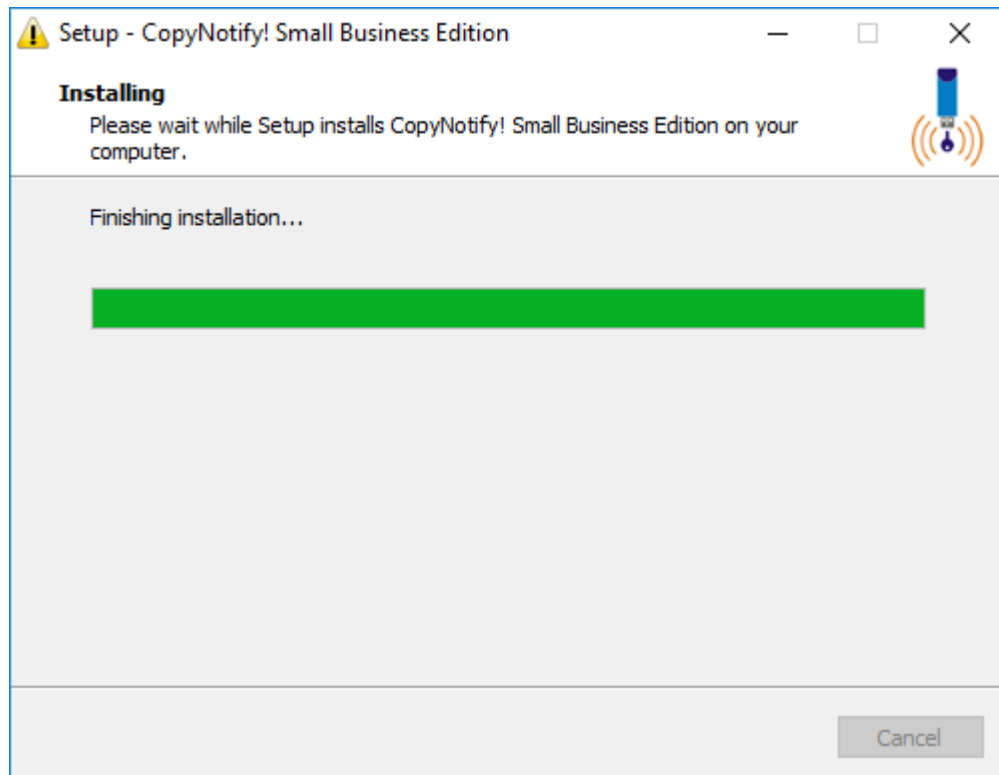


Click Yes to continue.



CopyNotify! (Version 1.4) Server INSTALLATION GUIDE

A progress bar will then appear to indicate the status of the installation.





CopyNotify! (Version 1.4) Server INSTALLATION GUIDE

Once the installation is complete the following screen will appear



Click on Finish to complete the installation.



CopyNotify! (Version 1.4) Server INSTALLATION GUIDE

CopyNotify! System Tray Icon

On successful completion of the installation, the CopyNotify! Server Icon will appear in the System Tray as shown below

