



## **Data Protection at a Key Stroke**

**Installation and Setup Guide.**

## INDEX

Topic	Page Number
1. <a href="#">Installation Instructions</a>	3
2. <a href="#">Locking Down the PC / Laptop</a>	8
3. <a href="#">UnLocking the PC / Laptop</a>	8
4. <a href="#">Changing Settings of Insta-LockDown.</a>	9
5. <a href="#">Changing the Password of Inst-LockDown.</a>	12
6. <a href="#">Registration of Insta-LockDown.</a>	14

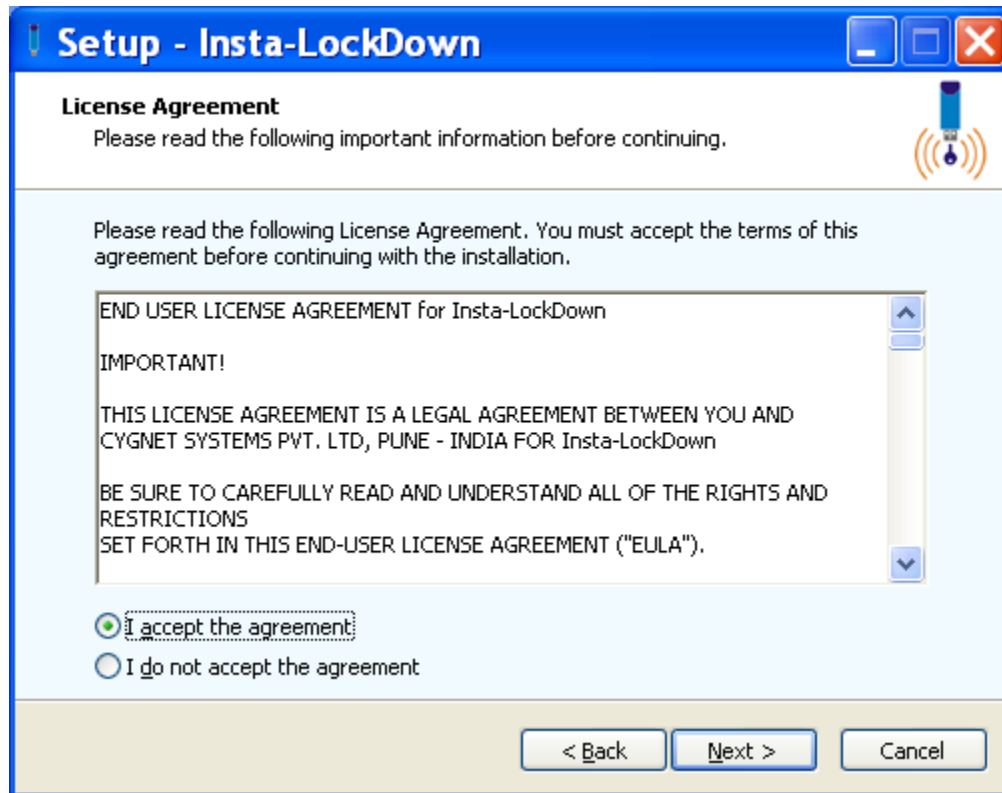
- **Installation Instructions** [[Back to Index](#)]

Download the Installation File of Insta-LockDown from the CopyNotify! Website [www.copynotify.com](http://www.copynotify.com).

Double Clicking on Insta-LockDown.exe will begin the installation of Insta-LockDown and the following screen will appear.



Click Next to Continue and the following screen will appear :-



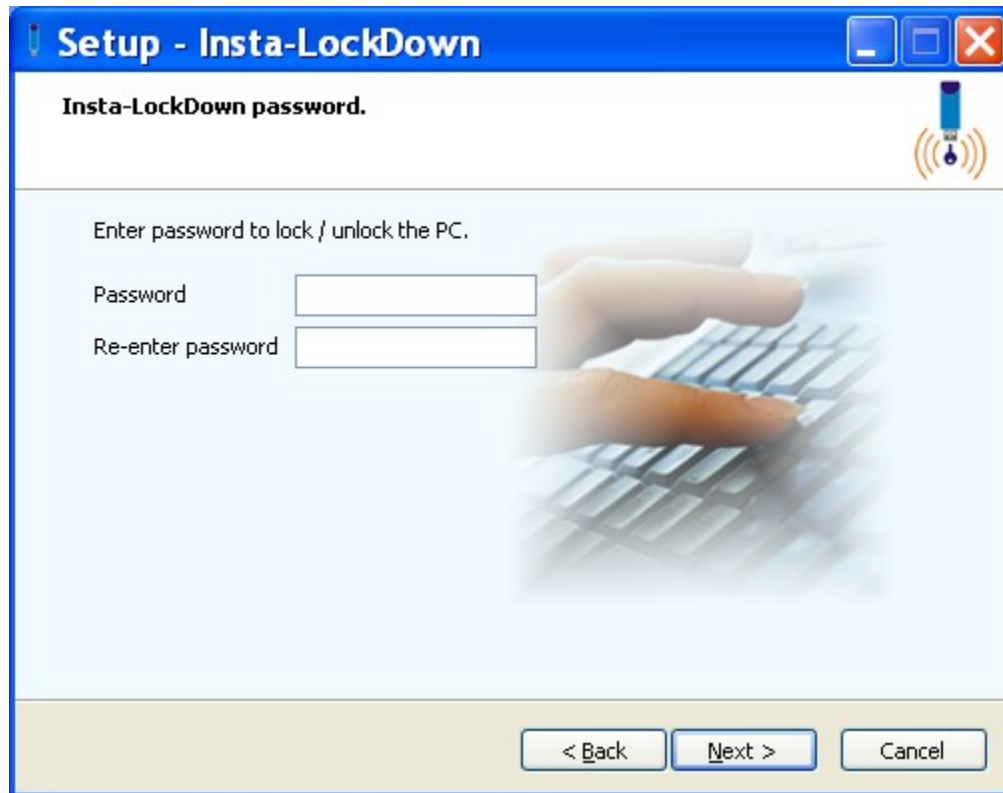
On accepting the terms and conditions of the License Agreement , click on 'I accept the agreement', click on 'Next' to continue and the following screen will appear :-



Select the 'Data Channels' of the PC / Laptop that need to be LOCKED (Restricted / Blocked).

S.No.	Data Channel	Description
1	USB	USB removable storage devices / drives
2	Bluetooth	Bluetooth Communication allows data from your PC / Laptop to be transferred to devices such as Smart Phones.
3	Modem / Data Card	Portable Modems / Data Cards which are used to connect to the internet to upload data from the PC / Laptop.
4	Attachments	<p>Uploading Data Attachments via Browser Based Web Application like Gmail, Hotmail, Yahoo Mail, Twitter, Facebook and YouTube.</p> <p>Gmail is a trademark of Google, Inc., Hotmail is a registered trademark of Microsoft Corp., Yahoo is a registered trademark of Yahoo Inc.</p> <p>'Facebook' is a registered trademark of Facebook, Inc., 'Twitter' is a registered trademark of Twitter, Inc., 'YouTube' is a registered trademark of Google, Inc.</p>
5	Network	Wired and Wireless Connectivity. (LAN)

Click on 'Next' to continue and the following screen will appear :-



Enter the 'Password' that will be used to Lock Down the PC / Laptop.

Click on 'Next' to continue and the following screen will appear :-



Click on 'Close' to complete the installation.

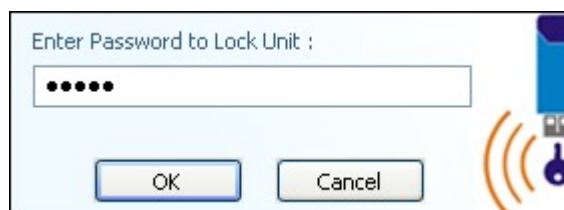
*Note:* On completion of this installation following is the status of data protection :-

- The data channels that have been chosen while install will be automatically Locked.
- In order to Unlock / Lock the default Key Stoke combination will Ctrl + Shift + L.
- The Registry Editor will be locked.

- **Locking Down the PC / Laptop** [[Back to Index](#)]

Press the Key Combination as specified during installation or via the Insta-LockDown Control Panel (default is Ctrl + Shift + L).

A dialog box as shown below will appear



Enter the password as specified during Installation or Insta-LockDown Control Panel and click on OK.

The data channels such as USB Media, Bluetooth etc. as specified during installation or via the Insta-LockDown Control Panel will get Locked Down. The Registry Editor will also be locked.

- **UnLocking the PC / Laptop** [[Back to Index](#)]

Press the Key Combination as specified during installation or via the Insta-LockDown Control Panel (default is Ctrl + Shift + L).

A dialog box as shown below will appear



Enter the password as specified during installation or in the Insta-LockDown Control Panel and click on OK.

The data channels such as USB Media, Bluetooth etc. as specified during Installation or via the Insta-LockDown Control Panel which were Locked Down (Blocked / Restricted) will now get Unlocked. The Registry Editor will also get locked.



- **Changing Settings of Insta-LockDown. [[Back to Index](#)]**

The Control Panel of Insta-LockDown can be accessed by double clicking the Desktop Icon of Insta-LockDown

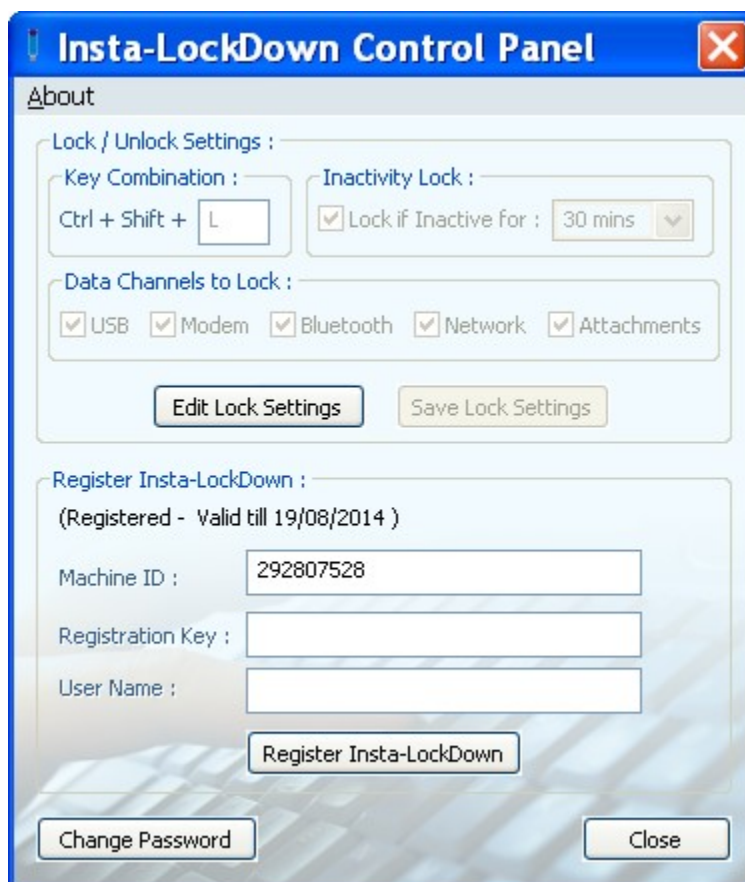
or

by clicking on Start / Programs / Insta-LockDown/ Insta-LockDown Control Panel.

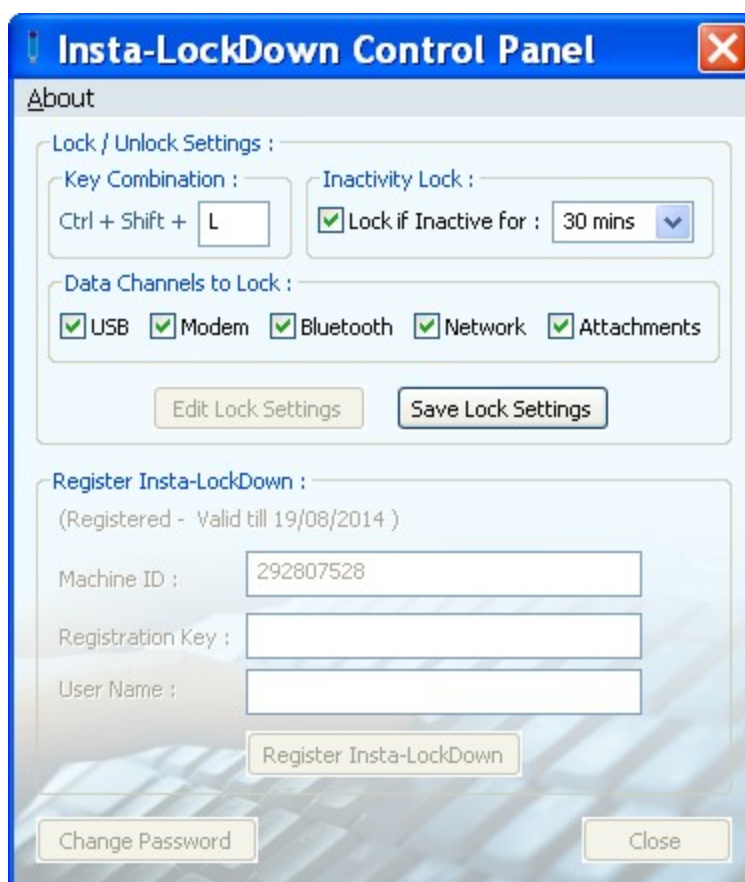
The password as specified will have to be entered to access the control panel of Insta-LockDown.



On Clicking on OK, the following screen will appear :-



Clicking on 'Edit Lock Settings' will allow the user to change the settings of Insta-LockDown as show in the screen below :-



Following are the setting that can be made :-

***Key Combination :***

The user can decide the alphabet of the Key Combination. It can be only between A-Z. Enter the key as required.

***Inactivity Lock :***

When enabled , Insta-Lockdown will automatically Lock Down the data channels as specified if the PC / Laptop has been left IDLE for the specified time interval.

Enable ' Lock if Inactive For' and specify the IDLE time interval after which the PC / Laptop will get locked down.

*Data Channels to Lock :*

Enable the 'Data Channels' i.e the possible ways that data can be copied out of the PC / Laptop that need to be Restricted / Blocked.

S.No.	Data Channel	Description
1	USB	USB removable storage devices / drives
2	Bluetooth	Bluetooth Communication allows data from your PC / Laptop to be transferred to devices such as Smart Phones.
3	Modem / Data Card	Portable Modems / Data Cards which are used to connect to the internet to upload data from the PC / Laptop.
4	Attachments	<p>Uploading Data Attachments via Browser Based Web Application like Gmail, Hotmail, Yahoo Mail, Twitter, Facebook and YouTube.</p> <p>Gmail is a trademark of Google, Inc., Hotmail is a registered trademark of Microsoft Corp., Yahoo is a registered trademark of Yahoo Inc.</p> <p>"Facebook" is a registered trademark of Facebook, Inc., "Twitter" is a registered trademark of Twitter, Inc., 'YouTube' is a registered trademark of Google, Inc.</p>
5	Network	Wired and Wireless Connectivity. (LAN)

Once the required setting have been made, click on 'Save Lock Settings'

Click on 'Close' to exit from Insta-LockDown Control Panel.

- **Changing the Password of Insta-LockDown. [[Back to Index](#)]**

The Control Panel of Insta-LockDown can be accessed by double clicking the Desktop Icon of Insta-LockDown

or

by clicking on Start / Programs / Insta-LockDown/ Insta-LockDown Control Panel.

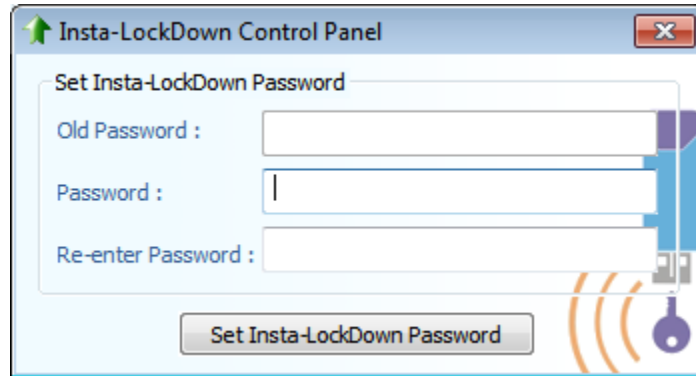
The password as specified will have to be entered to access the control panel of Insta-LockDown.



On Clicking on OK, the following screen will appear :-



Click on 'Change Password' and the following screen will appear :-



Enter Old Password and New Password and click on 'Set Insta-LockDown Password'. This will change the password.

Click on Close to exit from Insta-LockDown Control Panel.

- **Registration of Insta-LockDown. [[Back to Index](#)]**

The Installation that is downloaded from the website [www.copynotify.com](http://www.copynotify.com) is a fully featured evaluation which will expire in 15 days unless the software is purchased and a license key for the software is obtained.

Please contact [support@copynotify.com](mailto:support@copynotify.com) for further details.